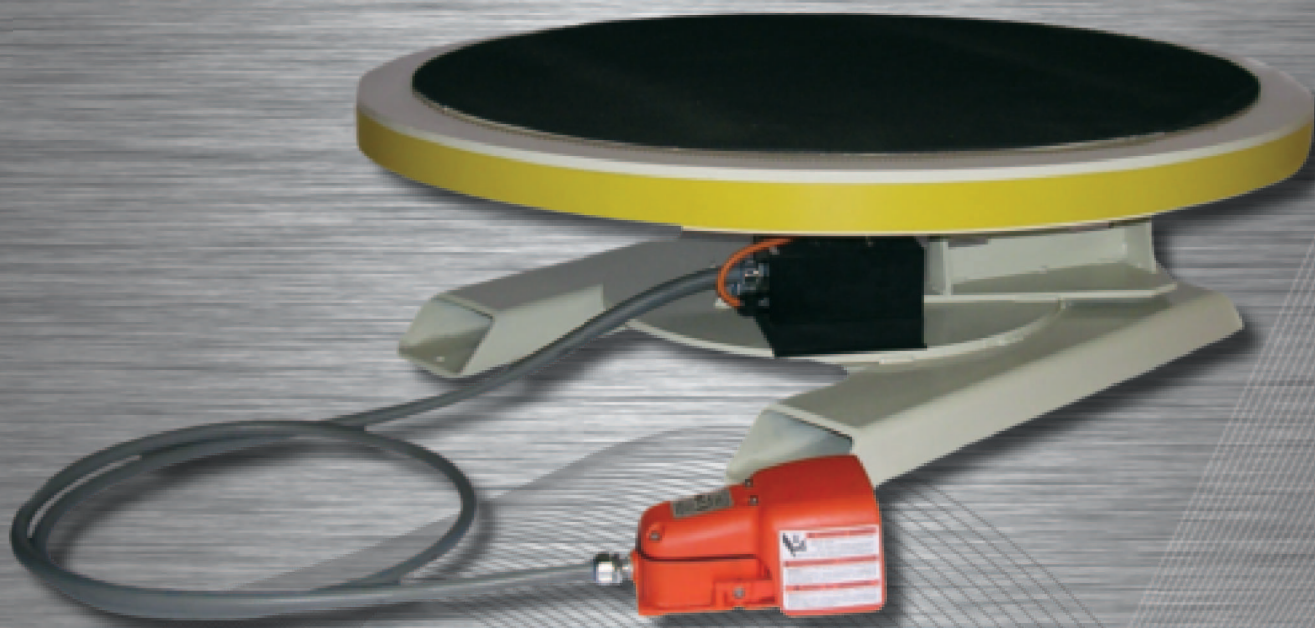


NEW

Durant Tool Company

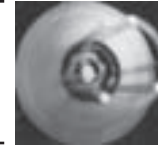
Manufacturers of
Exhibit Display Turntables
Factory Automation Turntables



www.durantco.com

Durant Tool Company

Manufacturers of
Exhibit Display, Factory Automation &
Packaging Turntables



Good Morning!

Here is your special copy of the completely new, full color DURANT TOOL Turntable Catalog, packed with 8 pages of the latest products and accessories.

Everything is at outstanding prices. For over 60 years Durant manufacturing, engineering and development have helped our customers worldwide find superior items offering the finest quality and best dollar value.

Pedestal Turntables, Cabinet Turntables, Factory/Automation Turntables, Exhibit and Display Turntables, Decoilers, and Uncoilers are manufactured in our modern factory with the highest quality components and specifications at the most competitive prices.

Standard machines are available in weight capacities to 12,000 lbs and 96" diameter turntables. Stainless steel and aluminum models are available for outside, food service, medical and special applications. Custom machines to customer specifications are available.

When your exhibit display, automation and packaging operations require turntables, look to Durant Tool Company.

See for yourself. Look through the catalog now and compare. I think you will agree that these are excellent products at prices among the lowest in the industry. I promise you that they will perform trouble-free, over and over for years and years.

Durant products are warrantied for three full years against all material or workmanship failure. (See our warranty on our website for details.) We will replace it or repair it.

So pick out the items you need, telephone, e-mail, fax or mail in your order. We will do the rest. For even faster service, call TOLL FREE 1-800-D-DURANT between 8:00am and 4:30pm EST / DST. Or FAX 401-738-2586, 24 hours a day.

Either way our friendly, knowledgeable customer service representatives are standing by, waiting to process your order – quickly, accurately and completely.

How can you lose? Quality products! Competitive pricing! Reliable delivery! And every Durant item is warrantied! If you are a long time Durant customer you know that is true. If you have not done business with us before, try us now and you will find out that it really is.

I look forward to receiving your order, and I thank you in advance.

Sincerely,

Edward W. Bouclin

200 Circuit Drive, North Kingstown, RI 02852 • USA • Phone: 1-401-781-7800 • Toll Free: 800-338-7268 • Fax: 1-401-738-2586
www.durantco.com

TRAINED INTERNATIONAL DISTRIBUTOR NETWORK

Durant has 200 trained, experienced Metal Stamping Distributors, throughout North America, South America, Europe, Middle East and Asia. Use our toll free number.

1-800-D-DURANT OR 1-800-338-7268
FOR YOUR NEAREST METAL STAMPING DISTRIBUTOR.

Durant Turntables

*Durant manufactures the largest selection of **Non Motorized and Variable Speed Motorized Turntables** for every type of requirement.*

*Whatever type of item you want to turn,
Durant has the Rotary Turntable to turn it!*

Durant's Rotary Turntables are utilized for exhibits and displays, factory and industrial automation, packaging industries, and most every type of rotation requirement.

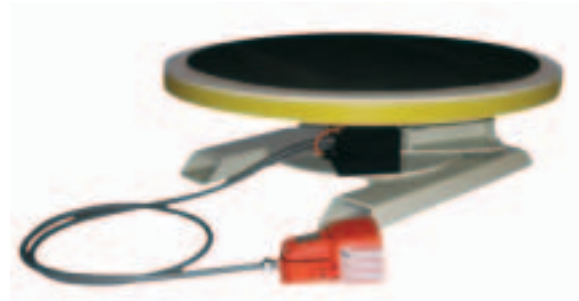
*Our weight capacities range from 50 lbs to 12,000 lbs and turntable diameters to 20'.
Standard turntable rotation speeds are 0-16 rpm or specify.*

All machines have a 3 year warranty utilizing the highest quality components.

The motorized turntables have a variable speed drive controller with foot pedal and reversing features. We insure that the turntable satisfies your specific requirements.



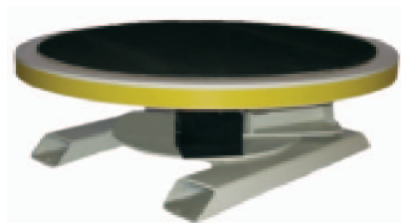
Cabinet Turntable



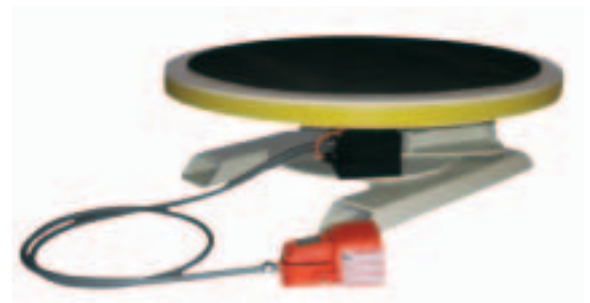
High Profile Turntable



Pedestal Turntable



Unmotorized High Profile Turntable



Motorized High Profile Turntable

High Profile Turntables

Non Motorized High Profile Models

Model	Weight Capacity	Turntable Diameter
XT-530-U	500 LBS (228 kg)	30" (762 mm)
XT-1030-U	1000 LBS (455 kg)	30" (762 mm)
XT-1036-U	1000 LBS (455 kg)	36" (915 mm)
XT-1042-U	1000 LBS (455 kg)	42" (1067 mm)
XT-2030-U	2000 LBS (909 kg)	30" (762 mm)
XT-2036-U	2000 LBS (909 kg)	36" (915 mm)
XT-2042-U	2000 LBS (909 kg)	42" (1067 mm)
XT-4036-U	4000 LBS (1818 kg)	36" (915 mm)
XT-4042-U	4000 LBS (1818 kg)	42" (1067 mm)
XT-4048-U	4000 LBS (1818 kg)	48" (1219 mm)
XT-4060-U	4000 LBS (1818 kg)	60" (1524 mm)
XT-5042-U	5000 LBS (2273 kg)	42" (1067 mm)
XT-5048-U	5000 LBS (2273 kg)	48" (1219 mm)
XT-5060-U	5000 LBS (2273 kg)	60" (1524 mm)
XT-5072-U	5000 LBS (2273 kg)	72" (1830 mm)

Variable Speed Motorized High Profile Models

Model	Weight Capacity	Turntable Diameter	Motor
XT-530-M	500 LBS (228 kg)	30" (762 mm)	¼ HP 115V
XT-1030-M	1000 LBS (455 kg)	30" (762 mm)	¼ HP 115V
XT-1036-M	1000 LBS (455 kg)	36" (915 mm)	¼ HP 115V
XT-1042-M	1000 LBS (455 kg)	42" (1067 mm)	¼ HP 115V
XT-2030-M	2000 LBS (909 kg)	30" (762 mm)	¼ HP 115V
XT-2036-M	2000 LBS (909 kg)	36" (915 mm)	¼ HP 115V
XT-2042-M	2000 LBS (909 kg)	42" (1067 mm)	¼ HP 115V
XT-4036-M	4000 LBS (1818 kg)	36" (915 mm)	¼ HP 115V
XT-4042-M	4000 LBS (1818 kg)	42" (1067 mm)	¼ HP 115V
XT-4048-M	4000 LBS (1818 kg)	48" (1219 mm)	¼ HP 115V
XT-4060-M	4000 LBS (1818 kg)	60" (1524 mm)	¼ HP 115V
XT-5042-M	5000 LBS (2273 kg)	42" (1067 mm)	1 HP 115V
XT-5048-M	5000 LBS (2273 kg)	48" (1219 mm)	1 HP 115V
XT-5060-M	5000 LBS (2273 kg)	60" (1524 mm)	1 HP 115V
XT-5072-M	5000 LBS (2273 kg)	72" (1830 mm)	1 HP 115V

FEATURES:

- USA Manufactured
- Heavy Duty Rugged Turntables and Base Construction
- Safe and Easy to Move
- Models to 12,000 lbs Capacity
- Special Turntable Diameters to 96"
- Heavy Duty Main Spindle Shaft and Bearings
- Quiet Variable Speed Drive
- Low Voltage Foot Pedal with 8' cord

OPTIONS:

- Hand Operated Control
- Special Turntable Diameters to 96"
- Special Turntable Height
- Special Weight Capacities to 12,000 lbs
- Indexing Turntable Option
- Zero Speed E/Stop Air Brake System
- Anti Slip Rubber Turntable Cover
- All Stainless Steel Construction
- Special Turntable RPM
- Special Paint Color
Ivory or Black Standard

BENEFITS:

- Smooth Turntable Rotation
- Heavy Duty Base Construction
- Safe and Easy to Move
- Durant's Quality, Manufacturing and Components are Rated #1
- 3 Year Warranty
- Versatile Machine for many Rotary Turntable Applications
- Durant Pricing is Always at the Most Competitive Levels

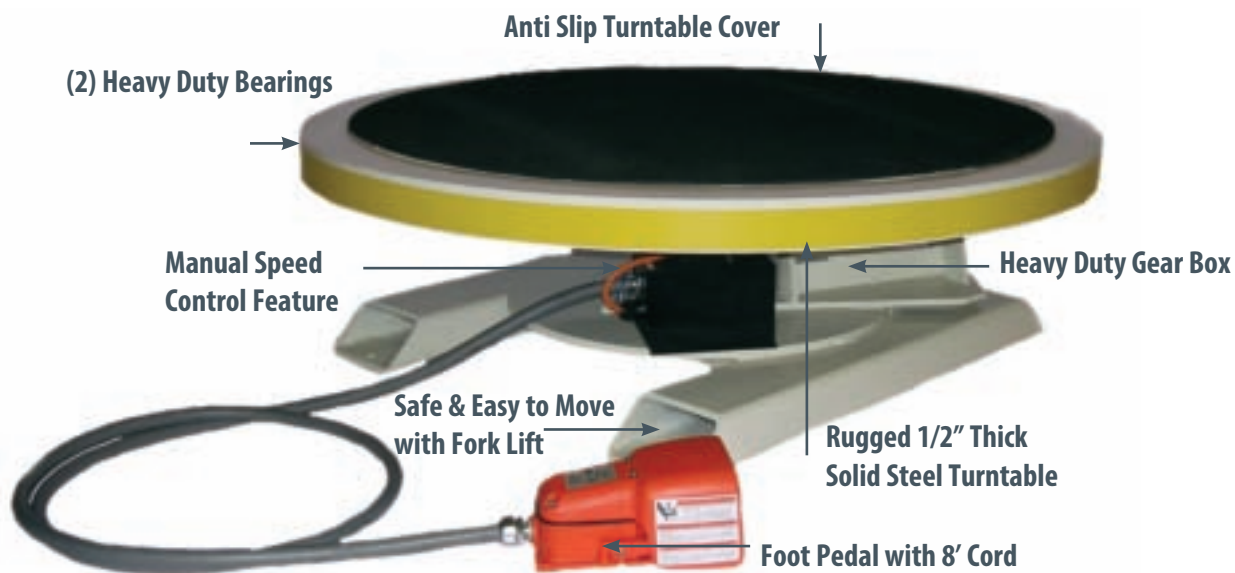


High Profile Turntables

High Profile Turntables

- 1) Durant Manufactures the largest selection of turntables for:
 - Exhibit Display
 - Factory Automation
 - Packaging
- 2) Durant offers a standard (3) year warranty on all turntables
- 3) Durant's quality, manufacturing and components are Rated #1
- 4) Durant pricing is always at the most competitive levels

- FEATURES:**
- USA Manufactured
 - Heavy duty, rugged turntable and base construction
 - Safe and easy to move with a fork lift
 - 3 year warranty
 - Models to 12,000 lbs capacity
 - Turntable diameters to 96" O.D.
 - Speeds 0-16 RPM
 - Anti Slip Turntable Cover
 - Quiet chain drive. No slippage with belt drives and friction wheels
 - Manual Speed Control
 - Low voltage foot pedal with an 8' cord
 - (2) Heavy duty bearings
 - Special sizes to customer specifications
 - Custom paint colors to customer specifications
 - All stainless steel models for outside, food service or medical applications



Model XT-4048-M
High Profile Motorized



Pedestal/Cabinet Turntables

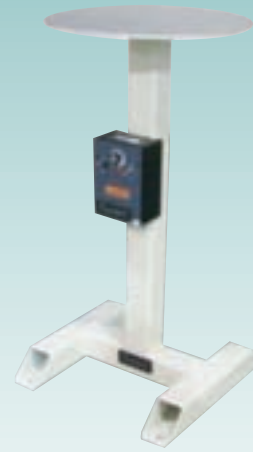
Durant manufactures 12 models of Pedestal and Cabinet mounted Variable Speed Motorized Turntables. All models are available in all Stainless Steel and Steel versions. Standard Turntable diameters are from 12" diameter to 60" diameter. Special Turntable diameters are available to customer specifications.

All models have a standard height of 34" from the turntable surface to the base. 4 adjustable leveling feet, with a ± 2 " adjustment, are standard equipment with each turntable. Other heights are available. Customer to specify at no additional cost.

Durant Rotary Turntables are supported by a center drive shaft and hub. All Turntables have a cage or turntable rim as standard. Customer to specify. A variable speed drive with foot pedal and reversible switch insures that the turntable satisfies your specific requirements.

FEATURES:

- USA Manufactured
- Heavy Duty Rugged Turntables and Base Construction
- Safe and Easy to Move
- Models from 12" diameter to 60" diameter Turntables
- Rugged Main Spindle Shaft and Bearings
- ± 2 " Adjustable Height with Leveling Feet
- Stainless Steel and Steel Construction Models
- Quiet Variable Speed Drive
- Low Voltage Foot Pedal with 8' cord



Pedestal Turntable



Cabinet Turntable



Pedestal/Cabinet Turntables

Pedestal Turntables

Model	Base	Turntable and Pedestal	Turntable Diameter	Leveling Feet 2" ±	Turntable RPM	Motor	Turntable Rim	Turntable Height	Reversible Variable Speed Control with Foot Pedal
SS-1000-PT	Pedestal	Stainless Steel	12"-30" Please Specify	4	0-16 RPM	1/8 HP 115V	Cage Type	34"	Standard
SP-1000-PT	Pedestal	Painted Steel	12"-30"	4	0-16 RPM	1/8 HP 115V	Cage Type	34"	Standard

Cabinet Turntables

Model	Base	Turntable and Cabinet	Turntable Diameter	Leveling Feet 2" ±	Turntable RPM	Motor	Turntable Rim	Turntable Height	Reversible Variable Speed Control with Foot Pedal
SS-2030-CT	Cabinet	Stainless Steel	30"	4	0-16 RPM	1/2 HP 115V	Cage Type	34"	Standard
SS-2036-CT	Cabinet	Stainless Steel	36"	4	0-16 RPM	1/2 HP 115V	Cage Type	34"	Standard
SS-2042-CT	Cabinet	Stainless Steel	42"	4	0-16 RPM	1/2 HP 115V	Cage Type	34"	Standard
SS-2048-CT	Cabinet	Stainless Steel	48"	4	0-16 RPM	3/4 HP 115V	Cage Type	34"	Standard
SS-2060-CT	Cabinet	Stainless Steel	60"	4	0-16 RPM	3/4 HP 115V	Cage Type	34"	Standard
SP-2030-CT	Cabinet	Painted Steel	30"	4	0-16 RPM	1/2 HP 115V	Cage Type	34"	Standard
SP-2036-CT	Cabinet	Painted Steel	36"	4	0-16 RPM	1/2 HP 115V	Cage Type	34"	Standard
SP-2042-CT	Cabinet	Painted Steel	42"	4	0-16 RPM	1/2 HP 115V	Cage Type	34"	Standard
SP-2048-CT	Cabinet	Painted Steel	48"	4	0-16 RPM	3/4 HP 115V	Cage Type	34"	Standard
SP-2060-CT	Cabinet	Painted Steel	60"	4	0-16 RPM	3/4 HP 115V	Cage Type	34"	Standard

OPTIONS:

- Hand Operated Control
- Special Turntable Diameters
- Special Turntable Height
- Indexing Turntable Option
- Servo Drive Controller Option
- Solid Turntable Rim (Up or Down Specify)
- UHMW Tabletops
- Aluminum Turntable
- Mirror Finish Aluminum Turntable and Rim

- Wooden Turntable
- Special Paint Color

BENEFITS:

- Smooth Turntable Rotation
- Rugged Base and Cabinet Construction
- Highest Quality Components
- 3 Year Warranty
- Versatile Machine for many Rotary Turntable Applications





Durant Tool Company

200 Circuit Drive
North Kingstown, RI 02852 USA

(401) 781-7800

(800) 338-7268

Fax: (401) 738-2586

www.durantco.com

